



PASSENGER CAR,SUV AND LIGHT TRUCK
BROCHURE

Shandong Xinghongyuan Tyre Co. Ltd is a subsidiary of the Xingyuan Group. The Xingyuan Group is ranked 24th in the World, according to the American "Rubber and Plastics News" magazine 2014's top 75 global tyre enterprises list. Shandong Xinghongyuan is located in Mengyin in the Shandong Province. The enterprise specializes in the production of passenger car tyres and has an annual production of 12 million tyres. Our site covers an area of 400 thousand square metres with a total investment of RMB 2.6 billion Yuan.

We work to the concept of "**Low carbon, Green, Efficient Environment**" and have world class production and testing equipment. Using the most advanced low-rolling resistance formula and structure design we produce safe, comfortable, high performance green tyres. To date we have developed in excess of 60 sizes of passenger car tyres. Our leading brand names include ANNAITE, HILO, ANCHEE and XINGHONGYUAN. The well known HILO brand has been awarded the trademark for ongoing development and export by the Chinese Institute of Industry and Commerce.

According to our managing principle "**Quality is our life, and makes our tyre be the global first class brand**" we take the quality of the tyre as our priority. Our tyres have passed certification by many well-known Technical Organizations and Quality Standards including DOT, ECE, CCC, INMETRO, GCC, SONCAP, BIS, ISO9001, ISO14001, ISO/TS16949, OHSAS18001 etc. Our products are sold to over 100 countries and regions such as Europe, Africa, Middle East, South East Asia, Latin America and North America.

With our high quality product, competitive pricing, on-time delivery and superb after sales service we have a reputation of being a reliable, trustworthy enterprise supplying an excellent product, to both the domestic and export markets. We would like to invite you to join us with a view of developing a long term business relationship.

CONTENTS

PASSENGER 01-04
AC 708 AC 808 AC 218

RUN-FLAT 05-05
TITAN ACF01

ULTRA HIGH PERFORMANCE 06-08
AC 718 AC 818

SUV 09-10
AC 828

LIGHT TRUCK 11-13
AC 838 AC 858 AC 898

WINTER TYRE 14-16
AC 868 ARCTIC W-8 ARCTIC W-9



HP/UHP/SUV/LT/WINTER TYRE/RUN-FLAT

PATTERN SUMMARY

HP



AC 708



AC 808



AC 218

LT



AC 838



AC 858



AC 898

UHP



AC 818



AC 718

WINTER—TYRE



AC 868



ARCTIC W-8



ARCTIC W-9

SUV



AC 828

RUN—FLAT



TITAN ACF01



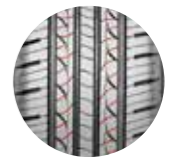
AC 808

TIRE SIZE	LOAD INDEX/ SPEED SYMBOL	STD. RIM (inch)	SECTION WIDTH (mm)	OVERALL DIAMETER (mm)	MAX LOAD (KGS)	MAX PRESSURE (lbs)	MAX PRESSURE (PKa)	MAX PRESSURE (PSI)	UTQG	
13 inch'										
155/65R13	73 T/S	4.50B	157	532	365 805	300	44	420AA	70	C E
155/70R13	75 T	4.50B	157	548	387 853	300	44	420AA	70	C E
155/80R13	79 T	4.50B	157	578	437 963	300	44	420AA	70	C E
165/65R13	77 T	5.00B	170	544	412 908	300	44	420AA	70	C E
165/70R13	79 T	5.00B	170	562	437 963	300	44	420AA	70	C E
165/80R13	83 T	4.50B	165	594	487 1074	300	44	420AA	70	C E
175/60R13	77 H	5.00B	177	540	412 908	300	44	420AA	70	C E
175/70R13	82 T	5.00B	177	576	475 1047	300	44	420AA	70	C E
185/70R13	86 T	5.50B	189	590	530 1168	300	44	420AA	70	C E
14 inch'										
155/65R14	75 S/T	4.5J	157	558	387 853	300	44	420AA	70	C E
165/60R14	75 H	5J	170	554	387 853	300	44	420AA	70	C E
165/65R14	79 T	5J	170	570	437 963	300	44	420AA	70	C E
165/70R14	81 T	5J	170	588	462 1019	300	44	420AA	70	C E
175/65R14	82 H	5J	177	584	475 1047	300	44	420AA	70	C E
175/65R14	82 T	5J	177	584	475 1047	300	44	420AA	70	C E
175/65R14	86T XL	5J	177	584	530 1168	340	50	420AA	71	C E
175/70R14	84 T	5J	177	602	500 1102	300	44	420AA	70	C E
175/70R14	88T XL	5J	177	602	560 1235	340	50	420AA	71	C E
185/55R14	80 H	6J	194	560	450 992	300	44	420AA	70	C C
185/60R14	82 H	5.5J	189	578	475 1047	300	44	420AA	70	C C
185/65R14	86 H	5.5J	189	596	530 1168	300	44	420AA	70	C C
185/70R14	88 T	5.5J	189	616	560 1235	300	44	420AA	70	C C
185/70R14	88 H	5.5J	189	616	560 1235	300	44	420AA	70	C C
195/60R14	86 H	6J	201	590	530 1168	300	44	420AA	71	C C
195/70R14	91 T	6J	201	630	615 1356	300	44	420AA	71	C C
195/70R14	91 H	6J	201	630	615 1356	300	44	420AA	71	C C
205/60R14	88 H	6J	209	602	560 1235	300	44	420AA	71	C C
205/70R14	98T XL	6J	209	644	750 1653	340	50	420AA	72	C C
205/75R14 (WSW)	95 H	5.5J	203	664	690 1521	300	44	420AA	71	C C
15 inch'										
175/65R15	84 H	5J	177	609	500 1102	300	44	420AA	70	C E
185/55R15	82 V	6J	194	585	475 1047	300	44	420AA	70	C C
185/60R15	84 H	5.5J	189	603	500 1102	300	44	420AA	70	C C
185/60R15	88H XL	5.5J	189	603	560 1235	340	50	420AA	71	C C
185/65R15	88 H	5.5J	189	621	560 1235	300	44	420AA	70	C C
185/65R15	88 T	5.5J	189	621	560 1235	300	44	420AA	70	C C
185/65R15	92T XL	5.5J	189	621	630 1389	340	50	420AA	71	C C
195/50R15	82 V	6J	201	577	475 1047	300	44	420AA	71	C C
195/55R15	85 V	6J	201	595	515 1135	300	44	420AA	71	C C

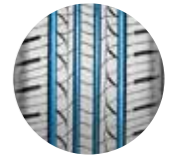
TIRE SIZE	LOAD INDEX/ SPEED SYMBOL	STD. RIM (inch)	SECTION WIDTH (mm)	OVERALL DIAMETER (mm)	MAX LOAD (KGS)	MAX PRESSURE (lbs)	MAX PRESSURE (PKa)	MAX PRESSURE (PSI)	UTQG	
15 inch										
195/60R15	88 H	6J	201	615	560 1235	300	44	420AA	71	C C
195/60R15	88 V	6J	201	615	560 1235	300	44	420AA	71	C C
195/65R15	91 H	6J	201	635	615 1356	300	44	420AA	71	C C
195/65R15	91 V	6J	201	635	615 1356	300	44	420AA	71	C C
195/65R15	95H XL	6J	201	635	690 1521	340	50	420AA	72	C C
205/60R15	91 H	6J	209	627	615 1356	300	44	420AA	71	C C
205/60R15	91 V	6J	209	627	615 1356	300	44	420AA	71	C C
205/65R15	94 H	6J	209	647	670 1477	300	44	420AA	71	C C
205/65R15	94 V	6J	209	647	670 1477	300	44	420AA	71	C C
205/70R15	96 T	6J	209	669	710 1565	300	44	420AA	71	C C
205/70R15 (WSW)	96 T	6J	209	669	710 1565	300	44	420AA	71	C C
215/60R15	94 H	6.5J	221	639	670 1477	300	44	420AA	71	C C
215/65R15	96 H	6.5J	221	661	710 1565	300	44	420AA	71	C C
215/65R15	100H XL	6.5J	221	661	800 1765	340	50	420AA	72	C C
215/70R15	98 T	6.5J	221	683	750 1653	300	44	420AA	71	C C
215/70R15 (WSW)	98 T	6.5J	221	683	750 1653	300	44	420AA	71	C C
16 inch'										
195/50R16	88V XL	6J	201	602	560 1235	340	50	420AA	72	C E
195/55R16	87 V	6J	201	620	545 1201	300	44	420AA	71	C C
195/55R16	91V XL	6J	201	620	615 1356	340	50	420AA	72	C C
195/55R16	91W XL	6J	201	620	615 1356	340	50	420AA	72	C C
195/60R16	89 V	6J	201	640	580 1279	300	44	420AA	71	C E
205/50R16	87 V	6.5J	214	612	545 1201	300	44	420AA	71	C C
205/50R16	87 W	6.5J	214	612	545 1201	300	44	420AA	71	C C
205/50R16	91W XL	6.5J	214	612	615 1356	340	50	420AA	72	C C
205/55R16	91 V	6.5J	214	632	615 1356	300	44	420AA	71	C C
205/55R16	91 W	6.5J	214	632	615 1356	300	44	420AA	71	C C
205/55R16	94V XL	6.5J	214	632	670 1477	340	50	420AA	72	C C
205/55R16	94W XL	6.5J	214	632	670 1477	340	50	420AA	72	C C
205/60R16	92 H	6J	209	652	630 1389	300	44	420AA	71	C C
205/60R16	92 V	6J	209	652	630 1389	300	44	420AA	71	C C
205/60R16	96H XL	6J	209	652	710 1565	340	50	420AA	72	C C
205/65R16	95 H	6J	209	672	690 1521	300	44	420AA	71	C C
215/55R16	93 V	7J	226	642	650 1433	300	44	420AA	71	C C
215/55R16	97V XL	7J	226	642	730 1609	340	50	420AA	72	C C
215/55R16	97W XL	7J	226	642	730 1609	340	50	420AA	72	C C
215/60R16	95 H	6.5J	221	664	690 1521	300	44	420AA	71	C C
215/60R16	99H XL	6.5J	221	664	775 1709	340	50	420AA	72	C C
215/60R16	99V XL	6.5J	221	664	775 1709	340	50	420AA	72	C C
225/55R16	99W XL	7J	233	654	775 1709	340	50	420AA	72	C C
225/60R16	98 H	6.5J	228	676	750 1653	300	44	420AA	71	C C



Technology used to reduce tyre noise.



Finely-divided tread pattern, corresponding to each division of the steel, ensures fantastic road grip performance in wet conditions and improves driving safety.



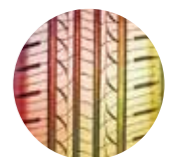
Four linear grooves ensures superior draining performance



Silicon formula optimizes tread stiffness, giving excellent wear and lowers rolling resistance.



Optimizing combination of tread construction, pattern and rubber effectively reduces fuel consumption.



The cut resistant tread reduces the possibility of irregular tread wear.

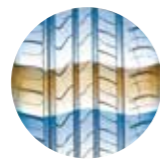


AC 218

TIRE SIZE	LOAD INDEX/ SPEED SYMBOL	STD. RIM (inch)	SECTION WIDTH (mm)	OVERALL DIAMETER (mm)	MAX LOAD (KGS) (lbs)	MAX PRESSURE KPa PSI	UTQG			
16 inch'										
205/55R16	94V XL	6.5J	214	632	670 1477	340 50	420AA	70	B	C



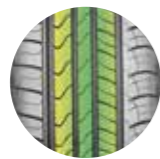
Multi-arc tread design provides superior manoeuvrability.



Technology used to reduce tyre noise.



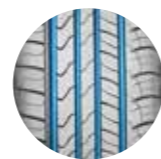
Silicon formula improves road grip.



Decreased tread block rigidity efficiently reduces the noise between the tread and the road surface to increase driving comfort.



Big block pattern design improves tyre rigidity.



Four longitudinal grooves and wide draining design provide brilliant drainage performance and manoeuvrability.

TIRE SIZE	LOAD INDEX/ SPEED SYMBOL	STD. RIM (inch)	SECTION WIDTH (mm)	OVERALL DIAMETER (mm)	MAX LOAD (KGS) (lbs)	MAX PRESSURE KPa (PSI)	UTQG			
15 inch'										
185/60R15	84 H	5.5J	189	603	500 1102	300 44	480AA	70	B	E
185/60R15	88H XL	5.5J	189	603	560 1235	340 50	480AA	71	B	E
185/65R15	88 H	5.5J	189	621	560 1235	300 44	480AA	70	B	E
185/65R15	88 T	5.5J	189	621	560 1235	300 44	480AA	70	B	E
185/65R15	92T XL	5.5J	189	621	630 1389	340 50	480AA	71	B	E
195/55R15	85 V	6J	201	595	515 1135	300 44	480AA	71	B	E
195/60R15	88 V	6J	201	615	560 1235	300 44	480AA	71	B	E
195/60R15	88 H	6J	201	615	560 1235	300 44	480AA	71	B	E
195/65R15	91 V	6J	201	635	615 1356	300 44	480AA	71	B	E
195/65R15	91 H	6J	201	635	615 1356	300 44	480AA	71	B	E
195/65R15	95H XL	6J	201	635	690 1521	340 50	480AA	72	B	E
205/65R15	94 V	6J	209	647	670 1477	300 44	480AA	71	B	E
205/65R15	94 H	6J	209	647	670 1477	300 44	480AA	71	B	E

TIRE SIZE	LOAD INDEX/ SPEED SYMBOL	STD. RIM (inch)	SECTION WIDTH (mm)	OVERALL DIAMETER (mm)	MAX LOAD (KGS) (lbs)	MAX PRESSURE KPa (PSI)	UTQG			
16 inch'										
205/55R16	91 V	6.5J	214	632	615 1356	300 44	480AA	71	B	E
205/55R16	91 W	6.5J	214	632	615 1356	300 44	480AA	71	B	E
205/55R16	94V XL	6.5J	214	632	670 1477	340 50	480AA	72	B	E
205/55R16	94W XL	6.5J	214	632	670 1477	340 50	480AA	72	B	E
205/60R16	92 V	6J	209	652	630 1389	300 44	480AA	71	B	E
205/60R16	92 H	6J	209	652	630 1389	300 44	480AA	71	B	E
205/60R16	96H XL	6J	209	652	710 1565	340 50	480AA	72	B	E
215/55R16	93 V	7J	226	642	650 1433	300 44	480AA	71	B	E
215/55R16	97W XL	7J	226	642	730 1609	340 50	480AA	72	B	E
215/55R16	97V XL	7J	226	642	730 1609	340 50	480AA	72	B	E
215/60R16	95 H	6.5J	221	664	690 1521	300 44	480AA	71	B	E
215/60R16	99V XL	6.5J	221	664	775 1709	340 50	480AA	72	B	E
215/60R16	99H XL	6.5J	221	664	775 1709	340 50	480AA	72	B	E



Handling Performance
Four wide circumferential grooves and extra grooves in the blocks contribute to efficient drainage



Silence
Varied pitch design reduces noise and makes driving more fluid and comfortable



AC 708

**ULTRA HIGH
PERFORMANCE**



TITAN ACF01

TIRE SIZE	LOAD INDEX/ SPEED SYMBOL	STD. RIM (inch)	SECTION WIDTH (mm)	OVERALL DIAMETER (mm)	MAX LOAD (KGS)	MAX LOAD (lbs)	MAX PRESSURE (PKa)	MAX PRESSURE (PSI)	UTQG	
16 inch										
205/55ZRF16	91 W	6.5J	214	632	615	1356	300	44	480AA	72 B E
17 inch'										
205/55ZRF17	91 W	6.5J	214	658	615	1356	300	44	480AA	72 B E
225/45ZRF17	94W XL	7.5J	225	634	670	1477	340	50	480AA	72 B E
225/45ZRF17	91 W	7.5J	225	634	615	1356	300	44	480AA	72 B E
225/50ZRF17	94 W	7J	233	658	670	1477	300	44	480AA	72 B E
225/55ZRF17	97 W	7J	233	680	730	1609	300	44	480AA	72 B E

TIRE SIZE	LOAD INDEX/ SPEED SYMBOL	STD. RIM (inch)	SECTION WIDTH (mm)	OVERALL DIAMETER (mm)	MAX LOAD (KGS)	MAX LOAD (lbs)	MAX PRESSURE (PKa)	MAX PRESSURE (PSI)	UTQG	
17 inch'										
205/50ZR17	93V XL	6.5J	214	638	650	1433	340	50	480AA	71 C E
215/45ZR17	91W XL	7J	213	626	615	1356	340	50	480AA	71 C E
215/50ZR17	95W XL	7J	226	648	690	1521	340	50	480AA	71 C E
215/55ZR17	98W XL	7J	226	668	750	1653	340	50	480AA	71 C E
225/45ZR17	94W XL	7.5J	225	634	670	1477	340	50	480AA	71 C E
225/45ZR17	94Y XL	7.5J	225	634	670	1477	340	50	480AA	71 C E
225/50ZR17	98W XL	7J	233	658	750	1653	340	50	480AA	71 C E
225/55ZR17	101W XL	7J	233	680	825	1819	340	50	480AA	71 C E
235/55ZR17	103W XL	7.5J	245	690	875	1929	340	50	480AA	71 C E
18 inch'										
225/45ZR18	95W XL	7.5J	225	659	690	1521	340	50	480AA	71 C E
235/45ZR18	98W XL	8J	236	669	750	1653	340	50	480AA	71 C E



AC 718



No more delays or being stranded on remote highways due to a flat tire.



Helps to avoid accidents caused by the loss of control from punctures or air leaks, increasing



Simple yet effective pattern design improves grip and drainage capabilities which lower the risk of hydroplaning



Optimized tread formula ensures high traction and low rolling resistance on dry roads; hydroplaning resistance is improved

ULTRA HIGH PERFORMANCE



AC 818

TIRE SIZE	LOAD INDEX/SPEED SYMBOL	STD. RIM (inch)	SECTION WIDTH (mm)	OVERALL DIAMETER (mm)	MAX LOAD (KGS)	MAX LOAD (lbs)	MAX PRESSURE (PKa)	MAX PRESSURE (PSI)	UTQG	
16 inch'										
185/50R16	81 V	6J	194	592	462	1019	300	44	480AA 70	B C
195/45R16	84V XL	6.5J	195	582	500	1102	340	50	480AA 72	B C
205/45ZR16	87W XL	7J	206	590	545	1201	340	50	480AA 72	B C
225/50ZR16	96W XL	7J	233	632	710	1565	340	50	480AA 72	B C
17 inch'										
205/40ZR17	84W XL	7.5J	212	596	500	1102	340	50	480AA 72	B C
205/45ZR17	88W XL	7J	206	616	560	1235	340	50	480AA 72	B C
205/50ZR17	93W XL	6.5J	214	638	650	1433	340	50	480AA 72	B C
205/55ZR17	95W XL	6.5J	214	658	690	1521	340	50	480AA 72	B C
215/40ZR17	87W XL	7.5J	218	604	545	1201	340	50	480AA 72	B C
215/45ZR17	91W XL	7J	213	626	615	1356	340	50	480AA 72	B C
215/50ZR17	95W XL	7J	226	648	690	1521	340	50	480AA 72	B C
215/55ZR17	94W XL	7J	226	668	670	1477	300	44	480AA 72	B C
215/55R17	98W XL	7J	226	668	750	1653	340	50	480AA 72	B C
225/45ZR17	94W XL	7.5J	225	634	670	1477	340	50	480AA 72	B C
225/45ZR17	94 Y XL	7.5J	225	634	670	1477	340	50	480AA 72	B C
225/50ZR17	98W XL	7J	233	658	750	1653	340	50	480AA 72	B C
225/55ZR17	101W XL	7J	233	680	825	1819	340	50	480AA 72	B C
235/45ZR17	97W XL	8J	236	644	730	1609	340	50	480AA 72	B C
235/50R17	100W XL	7.5J	245	668	800	1764	340	50	480AA 72	B C
235/55ZR17	103W XL	7.5J	245	690	875	1929	340	50	480AA 72	B C
245/40ZR17	95W XL	8.5J	248	628	690	1521	340	50	480AA 72	B C
245/45ZR17	99W XL	8J	243	652	775	1709	340	50	480AA 72	B C



Unique carbon polymer composite efficiently improves the traction capability and reduces the rolling resistance.

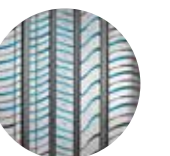


Asymmetric tread design with tiny internal pattern for better road grip and external big block for maximizing ground contact.

TIRE SIZE	LOAD INDEX/SPEED SYMBOL	STD. RIM (inch)	SECTION WIDTH (mm)	OVERALL DIAMETER (mm)	MAX LOAD (KGS)	MAX LOAD (lbs)	MAX PRESSURE (PKa)	MAX PRESSURE (PSI)	UTQG	
18 inch'										
215/35ZR18	84 W XL	7.5J	218	607	500	1102	340	50	480 AA 72	B C
215/45R18	93W XL	7J	213	651	650	1433	340	50	480AA 72	B C
225/40ZR18	92W XL	8J	230	637	630	1389	340	50	480 AA 72	B C
225/40ZR18	92 Y XL	8J	230	637	630	1389	340	50	480 AA 72	B C
225/45ZR18	95W XL	7.5J	225	659	690	1521	340	50	480 AA 72	B C
225/50R18	95 W	7J	233	683	690	1521	300	44	480AA 71	B C
235/40ZR18	95W XL	8.5J	241	645	690	1521	340	50	480 AA 72	B C
235/45ZR18	94W	8J	236	669	670	1477	350	51	480 AA 71	B C
235/45ZR18	98W XL	8J	236	669	750	1653	340	50	480 AA 72	B C
235/45ZR18	98Y XL	8J	236	669	750	1653	340	50	480 AA 72	B C
235/50ZR18	97W	7.5J	245	693	730	1609	350	51	480 AA 71	B C
245/40ZR18	97 W XL	8.5J	248	653	730	1609	340	50	480 AA 72	B C
245/45ZR18	100W XL	8J	243	677	800	1764	340	50	480 AA 72	B C
245/50R18	104W XL	7.5J	253	703	900	1984	340	50	480AA 72	B C
255/45ZR18	103W XL	8.5J	255	687	875	1929	340	50	480 AA 73	B C
19 inch'										
225/35ZR19	88W XL	8J	230	641	560	1235	340	50	480 AA 72	B C
225/55R19	103V XL	7J	233	731	875	1929	340	50	480AA 72	B C
235/35ZR19	91W XL	8.5J	241	647	615	1356	340	50	480AA 72	B C
235/50ZR19	103W XL	7.5J	245	719	875	1929	340	50	480AA 72	B C
245/35ZR19	93W XL	8.5J	248	655	650	1433	340	50	480AA 72	B C
245/40ZR19	98W XL	8.5J	248	679	750	1653	340	50	480AA 72	B C
245/45ZR19	102W XL	8J	243	703	850	1874	340	50	480AA 72	B C
255/40ZR19	100Y/W XL	9J	260	687	800	1764	340	50	480AA 73	B C
255/45ZR19	104Y/W XL	8.5J	255	713	900	1984	340	50	480AA 73	B C
265/30ZR19	93W XL	9.5J	271	643	650	1433	340	50	480AA 73	B C
275/30ZR19	96W XL	9.5J	278	649	710	1565	340	50	480AA 73	B C
275/35ZR19	100Y/W XL	9.5J	278	675	800	1764	340	50	480AA 73	B C
275/40ZR19	105Y XL	9.5J	278	703	925	2039	340	50	480AA 73	B C
20 inch'										
245/30ZR20	90W XL	8.5J	248	656	600	1323	340	50	480AA 72	B C
245/35ZR20	95 W XL	8.5J	248	680	690	1521	340	50	480 AA 72	B C
245/45ZR20	103Y XL	8J	243	728	875	1929	340	50	480AA 72	B C
21 inch'										
295/40ZR21	111Y XL	10.5J	301	769	1090	2403	340	50	480AA 75	B C
22 inch'										
295/25ZR22	97 W XL	10.5	301	707	730	1609	340	50	480AA 75	B C



Special tread design brings greater lateral rigidity and longitudinal flexibility



The optimal distribution of the tread pattern blocks and grooves achieves optimum balance of control, giving low noise and driving comfort.



Long mileage and driving comfort



TIRE SIZE	LOAD INDEX/ SPEED SYMBOL	STD. RIM (inch)	SECTION WIDTH (mm)	OVERALL DIAMETER (mm)	MAX LOAD (KGS)	MAX LOAD (lbs)	MAX PRESSURE (PKa)	MAX PRESSURE (PSI)	UTQG	
15 inch'										
205/75R15 (wsw)	97 H	5.5J	203	689	730	1609	300	44	520 AA	71 B C
205/75R15	97 H	5.5J	203	689	730	1609	300	44	520 AA	71 B C
215/75R15 (wsw)	100 H	6J	216	703	800	1764	300	44	520 AA	71 B C
215/75R15 (wl)	100 H	6J	216	703	800	1764	300	44	520 AA	71 B C
215/75R15	100 H	6J	216	703	800	1764	300	44	520 AA	71 B C
225/70R15	100 H	6.5J	228	697	800	1764	300	44	520 AA	71 B C
225/70R15 (wsw)	100 H	6.5J	228	697	800	1764	300	44	520 AA	71 B C
225/75R15 (wsw)	102 H	6J	223	719	850	1874	300	44	520 AA	71 B C
225/75R15	102 H	6J	223	719	850	1874	300	44	520 AA	71 B C
225/75R15 (wl)	102 H	6J	223	719	850	1874	300	44	520 AA	71 B C
235/75R15	105 H	6.5J	235	733	925	2039	300	44	520 AA	71 B C
235/75R15 (wsw)	105 H	6.5J	235	733	925	2039	300	44	520 AA	71 B C
255/70R15	108 H	7.5J	260	739	1000	2205	350	51	520 AA	72 B C
265/70R15	112 H	8J	272	753	1120	2469	350	51	520 AA	72 B C
16 inch'										
205/65R16	95 H	6J	209	672	690	1521	300	44	520AA	71 B C
215/65R16	98 H	6.5J	221	686	750	1653	300	44	520 AA	71 B C
215/70R16	100 H	6.5J	221	708	800	1764	350	51	520 AA	71 B C
225/70R16	103 H	6.5J	228	722	875	1929	350	51	520 AA	71 B C
235/60R16	100 H	7J	240	688	800	1764	300	44	520 AA	71 B C
235/65R16	103 H	7J	240	712	875	1929	300	44	520 AA	71 B C
235/70R16	106 H	7J	240	736	950	2094	350	51	520 AA	71 B C
245/70R16	107 H	7J	248	750	975	2149	350	51	520 AA	71 B C
245/75R16	111 H	7J	248	774	1090	2403	350	51	520 AA	71 B C
255/65R16	109 H	7.5J	260	738	1030	2271	300	44	520 AA	72 B C
255/70R16	111 H	7.5J	260	764	1090	2403	350	51	520 AA	72 B C
265/70R16	112 H	8J	272	778	1120	2469	350	51	520 AA	72 B C
265/70R16	115H XL	8J	272	778	1215	2679	340	50	520 AA	73 B C
265/75R16	116 H	7.5J	267	804	1250	2756	350	51	520 AA	72 B C
275/70R16	114 H	8J	279	792	1180	2601	350	51	520 AA	72 B C
20 inch'										
245/50R20	102 V	7.5J	253	754	850	1874	350	51	520AA	71 B C
275/40ZR20	106Y XL	9.5J	278	728	950	2094	340	50	520AA	73 B C
275/45ZR20	110Y XL	9J	273	756	1060	2337	340	50	520AA	73 B C
285/50R20	116V XL	9J	297	794	1250	2756	340	50	520AA	75 B C
21 inch'										
275/45R21	110Y XL	9J	273	781	1060	2337	340	50	520AA	73 B C

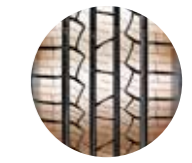


AC 828

TIRE SIZE	LOAD INDEX/ SPEED SYMBOL	STD. RIM (inch)	SECTION WIDTH (mm)	OVERALL DIAMETER (mm)	MAX LOAD (KGS)	MAX LOAD (lbs)	MAX PRESSURE (PKa)	MAX PRESSURE (PSI)	UTQG	
17 inch'										
215/60R17	96 H	6.5J	221	690	710	1565	300	44	520 AA	71 B C
215/65R17	99 H	6.5J	221	712	775	1709	300	44	520 AA	71 B C
225/60R17	99 H	6.5J	228	702	775	1709	300	44	520 AA	71 B C
225/65R17	102 H	6.5J	228	724	850	1874	300	44	520 AA	71 B C
225/70R17	108H XL	6.5J	228	748	1000	2205	340	50	520 AA	72 B C
235/60R17	102 H	7J	240	714	850	1874	300	44	520 AA	71 B C
235/65R17	104 H	7J	240	738	900	1984	350	51	520 AA	71 B C
235/70R17	109H XL	7J	240	762	1030	2271	340	50	520 AA	72 B C
245/65R17	107 H	7J	248	750	975	2149	350	51	520 AA	71 B C
245/70R17	110 H	7J	248	776	1060	2337	350	51	520 AA	71 B C
255/60R17	106 H	7.5J	260	738	950	2094	350	51	520 AA	72 B C
255/65R17	110 H	7.5J	260	764	1060	2337	350	51	520 AA	72 B C
265/65R17	112 H	8J	272	776	1120	2469	350	51	520 AA	72 B C
265/70R17	115 H	8J	272	804	1215	2679	350	51	520 AA	72 B C
18 inch'										
215/55R18	99W XL	7J	226	693	775	1709	340	50	520 AA	72 B C
225/55R18	102W XL	7J	233	705	850	1874	340	50	520 AA	72 B C
225/60R18	100 H	6.5J	228	727	800	1764	300	44	520 AA	71 B C
225/60R18	100 V	6.5J	228	727	800	1764	300	44	520 AA	71 B C
235/55R18	104W XL	7.5J	245	715	900	1984	340	50	520 AA	72 B C
235/60R18	107H XL	7J	240	739	975	2149	340	50	520 AA	72 B C
235/60R18	107 V XL	7J	240	739	975	2149	340	50	520 AA	72 B C
235/65R18	110 H XL	7J	240	763	1060	2337	340	50	520 AA	72 B C
245/60R18	105 H	7J	248	751	925	2039	350	51	520 AA	71 B C
255/55R18	109 V XL	8J	265	737	1030	2271	340	50	520 AA	73 B C
255/55R18	109W XL	8J	265	737	1030	2271	340	50	520 AA	73 B C
255/60R18	112 H XL	7.5J	260	763	1120	2469	340	50	520 AA	73 B C
255/60R18	112 V XL	7.5J	260	763	1120	2469	340	50	520 AA	73 B C
265/60R18	110 H	8J	272	775	1060	2337	350	51	520 AA	72 B C
285/60R18	116 H	8.5J	292	799	1250	2756	300	44	520 AA	74 B C
19 inch'										
235/55R19	105 V XL	7.5J	245	741	925	2039	340	50	520 AA	72 B C
245/55R19	103 V	7.5J	253	753	875	1929	350	51	520 AA	71 B C
255/50R19	107W XL	8J	265	739	975	2149	340	50	520 AA	73 B C
255/50R19	107 Y XL	8J	265	739	975	2149	340	50	520 AA	73 B C
255/55R19	111 V XL	8J	265	763	1090	2403	340	50	520 AA	73 B C
265/50R19	110W XL	8.5J	277	749	1060	2337	340	50	520 AA	73 B C



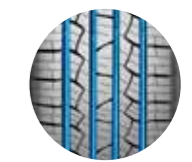
Unique carbon polymer composite efficiently improve the traction capability and reduces the rolling resistance.



Optimized pitch arrangement and tread profile reduces noise



High density longitudinal and lateral zigzag pattern design ensures close connection between tire tread and road surface to increase lateral rigidity



Four longitudinal grooves and a wide contact area provide outstand drainage performance and manoeuvrability



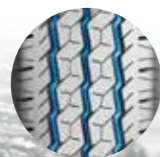
AC 838

TIRE SIZE	PR	LOAD INDEX/ SPEED SYMBOL	STD. RIM (inch)	SECTION WIDTH (mm)	OVERALL DIAMETER (mm)	MAX LOAD (KGS)	MAX PRESSURE (lbs)	MAX PRESSURE (PKa)	MAX PRESSURE (PSI)	🌀	🌀	🌀
12 inch'												
145/80R12LT 6PR 80/78N 4.00B	145	537 450/425 992/937	350	50	72	C	E					
13 inch'												
155R13C 8PR 90/88Q 4.50B	157	578 600/560 1323/1235	450	65	72	C	E					
165R13C 8PR 94/93S 4.50B	167	596 670/650 1477/1433	450	65	72	C	E					
14 inch'												
165R14C 8PR 97/95S 4.5J	167	622 730/690 1609/1521	450	65	72	C	E					
175R14C 8PR 99/97 R 5.0J	178	634 775/730 1710/1610	450	65	72	C	E					
185R14C 8PR 102/100R 5.5J	188	650 850/800 1875/1765	450	65	72	C	E					
185R14C 6PR 97/95 R 5.5J	188	650 730/690 1610/1520	350	51	72	C	E					
195R14C 8PR 106/104R 5.5J	198	666 950/900 2095/1985	450	65	72	C	E					
195R14C(wsw) 8PR 106/104R 5.5J	198	666 950/900 2095/1985	450	65	72	C	E					
15 inch'												
195R15C 8PR 106/104R 5.5J	198	690 950/900 2095/1985	450	65	72	C	E					
195R15C (wsw) 8PR 106/104R 5.5J	198	690 950/900 2095/1985	450	65	72	C	E					
195/70R15C 8PR 104/102R 6J	201	655 900/850 1985/1875	450	65	72	C	E					
205/70R15C 8PR 106/104R 6J	209	669 950/900 2095/1985	450	65	72	C	E					
215R15C 8PR 111/109R 6J	218	724 1090/1030 2405/2270	450	65	72	C	E					
215/65R15C 6PR 104/102T 6.5J	221	661 900/850 1985/1875	375	55	72	C	E					
215/70R15C 8PR 109/107R 6.5J	221	683 1030/975 2270/2150	450	65	72	C	E					
225/70R15C 8PR 112/110R 6.5J	228	697 1120/1060 2470/2335	450	65	72	C	E					
225/70R15C (wsw) 8PR 112/110R 6.5J	228	697 1120/1060 2470/2335	450	65	72	C	E					
16 inch'												
185/75R16C 8PR 104/102R 5J	184	684 900/850 1985/1875	475	69	72	C	E					
195/60R16C 6PR 99/97 H 6J	201	640 775/730 1710/1610	375	55	72	C	E					
195/65R16C 8PR 104/102T 6J	201	660 900/850 1985/1875	475	69	72	C	E					
195/75R16C 8PR 107/105R 5.5J	196	698 975/925 2150/2040	475	69	72	C	E					
205/65R16C 8PR 107/105T 6J	209	672 975/925 2150/2040	475	69	72	C	E					
205/75R16C 8PR 110/108R 5.5J	203	714 1060/1000 2335/2205	475	69	72	C	E					
215/60R16C 6PR 103/101 T 6.5J	221	664 875/825 1930/1820	375	55	72	C	E					
215/60R16C 8PR 108/106T 6.5J	221	664 1000/950 2205/2095	475	69	72	C	E					
215/65R16C 8PR 109/107 T 6.5J	221	686 1030/975 2270/2150	475	69	72	C	E					
215/70R16C 6PR 108/106R 6.5J	221	708 1000/950 2205/2095	375	55	72	C	E					
215/75R16C 8PR 113/111R 6J	216	728 1150/1090 2535/2405	475	69	72	C	E					
225/65R16C 8PR 112/110T 6.5J	228	698 1120/1060 2470/2335	475	69	72	C	E					
235/65R16C 8PR 115/113T 7J	240	712 1215/1150 2680/2535	475	69	72	C	E					

TIRE SIZE	PR	LOAD INDEX/ SPEED SYMBOL	STD. RIM (inch)	SECTION WIDTH (mm)	OVERALL DIAMETER (mm)	MAX LOAD (KGS)	MAX PRESSURE (lbs)	MAX PRESSURE (PKa)	MAX PRESSURE (PSI)
16 inch'									
7.00R16LT 12PR 115/110N 5.50F	200	775 1215/1060 2680/2335	670	97					
7.00R16LT 8PR 107/102N 5.50F	200	775 975/850 2150/1875	460	67					
7.00R16LT 6PR 101/96 N 5.50F	200	775 825/710 1820/1565	350	50					
7.50R16LT 14PR 122/118N 6.00G	215	805 1500/1320 3305/2910	770	112					
7.50R16LT 14PR 120/118N 6.00G	215	805 1400/1320 3085/2910	770	112					



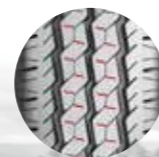
AC 898



Closed shoulder design provides superior lateral rigidity, traction and braking capacity



zigzag design provides excellent grip.



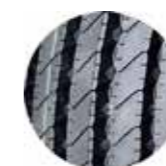
The middle big blocks pattern and shoulder transverse pattern increase control stability and running miles



Three longitudinal grooves provide excellent draining performance



Optimized wet and dry performance, highly efficient in preventing side wear, and longer mileage.



Strengthened tire structure and reinforced carcass ensure greater load capacity.



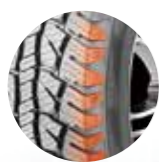
AC 858

TIRE SIZE	LOAD INDEX/ SPEED SYMBOL	STD. RIM (inch)	SECTION WIDTH (mm)	OVERALL DIAMETER (mm)	MAX LOAD (KGS)	MAX LOAD (lbs)	MAX PRESSURE (PKa)	MAX PRESSURE (PSI)	🌀	🌀	🌀
15 inch'											
LT215/75R15	6PR 100/97 S	6J	216	703	800/730	1765/1610	350	51	72	B	E
LT225/75R15	6PR 102/99 S	6J	223	719	850/775	1875/1710	350	51	72	B	E
LT235/75R15	6PR 104/101R	6.5J	235	733	900/825	1985/1820	350	50	72	B	E
31X10.50R15LT	6PR 109 R	8.5J	268	775	1030	2270	350	50	72	A	E
16 inch'											
205R16C	8PR 110/108R	6J	208	736	1060/1000	2337/2205	450	65	72	B	E
LT215/85R16	10PRI15/112R	6J	216	772	1215/1120	2680/2470	550	80	72	B	E
LT225/75R16	10PRI15/112R	6J	223	744	1215/1120	2680/2470	550	80	72	B	E
235/70R16	106 T	7J	240	736	950	2094	350	51	71	C	E
LT235/85R16	10PRI20/116R	6.5J	235	806	1380/1260	3021/2778	550	80	72	B	E
245/70R16	107 T	7J	248	750	975	2149	350	51	71	C	E
LT245/75R16	10PRI20/116R	7J	248	774	1380/1260	3042/2778	550	80	72	B	E
265/70R16	112 T	8J	272	778	1120	2469	350	51	72	C	E
LT265/75R16	10PRI20/117R	7.5J	267	804	1400/1285	3085/2835	550	80	72	B	E
LT265/75R16	10PRI23/120R	7.5J	267	804	1550/1400	3415/3085	550	80	72	B	E
17 inch'											
265/65R17	112 T	8J	272	776	1120	2469	350	51	72	C	E
265/70R17	115 T	8J	272	804	1215	2679	350	51	72	C	E
18 inch'											
265/60R18	110 T	8J	272	775	1060	2337	350	51	72	C	E
20 inch'											
265/50R20	111T XL	8.5J	277	774	1090	2403	340	50	72	C	E

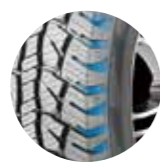
TIRE SIZE	LOAD INDEX/ SPEED SYMBOL	STD. RIM (inch)	SECTION WIDTH (mm)	OVERALL DIAMETER (mm)	MAX LOAD (KGS)	MAX LOAD (lbs)	MAX PRESSURE (PKa)	MAX PRESSURE (PSI)	🌀	🌀	🌀
13 inch'											
165/70R13	79T	5.00B	170	562	437	963	300	44	71	E	E
14 inch'											
175/70R14	84 T	5J	177	602	500	1102	300	44	71	E	E
185/70R14	88 T	5.5J	189	616	560	1235	300	44	71	E	E
195/60R14	86 T	6J	201	590	530	1168	300	44	72	E	E
175R14LT	99/97 R	5J	177	636	775/730	1710/1610	450	65	72	E	C
185R14LT	102/100R	5.5J	189	652	850/800	1875/1765	450	65	72	E	C
15 inch'											
195/60R15	88 T	6J	201	615	560	1235	300	44	72	E	E
195/65R15	91 T	6J	201	635	615	1356	300	44	72	E	E
205/70R15	96 S	6J	209	669	710	1565	300	44	72	E	C
215/75R15	100S	6J	216	703	800	1764	300	44	72	E	C
235/75R15	105S	6.5J	235	733	925	2039	350	51	72	E	C
16 inch'											
195/60R16	89 T	6J	201	640	580	1279	300	44	72	E	E
205/55R16	91 H	6.5J	214	632	615	1356	300	44	72	E	C
215/70R16	100 S	6.5J	221	708	800	1764	350	51	72	E	C
235/70R16	106 S	7J	240	736	950	2094	350	51	72	E	C
17 inch'											
225/45R17	94H XL	7.5J	225	634	670	1477	340	50	72	E	C



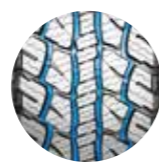
AC 868



Strong carcass and convex sidewall design ensures superior wear resistance



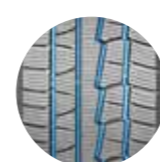
Wide open shoulder design provides superior lateral rigidity, traction and braking capacity



Four curved grooves increase grip and self-cleaning capacity on irregular road conditions such as mud and gravel



Zigzag sheet steel provides excellent ground grasping and driving comfort



Four longitudinal grooves improve draining performance and grip capacity on snow



Asymmetric tread design improves cornering manoeuvrability.



High density and uniform distribution on silica nanoparticles provides a silent ride with the best ride comfort.



ARCTIC W-8

TIRE SIZE	LOAD INDEX/ SPEED SYMBOL	STD. RIM (inch)	SECTION WIDTH (mm)	OVERALL DIAMETER (mm)	MAX LOAD (KGS)	MAX LOAD (lbs)	MAX PRESSURE (PKa)	MAX PRESSURE (PSI)			
17 inch'											
215/45R17	91H XL	7J	213	626	615	1356	340	50	72	E	E
215/50R17	95H XL	7J	226	648	690	1521	340	50	72	E	E
215/55R17	98T XL	7J	226	668	750	1653	340	50	72	E	E
235/55R17	99 S	7.5J	245	690	775	1709	300	44	72	E	E
18 inch'											
225/45R18	95S XL	7.5J	225	659	690	1521	340	50	72	E	E
225/50R18	99T XL	7J	233	683	775	1709	340	50	72	E	E
235/45R18	98S XL	8J	236	669	750	1653	340	50	72	E	E
245/45R18	96 S	8J	243	677	710	1565	300	44	72	E	E
19 inch'											
255/40R19	100T XL	9J	260	687	800	1764	340	50	71	E	E
20 inch'											
255/50R20	109S XL	8J	265	764	1030	2271	340	50	73	E	E

TIRE SIZE	LOAD INDEX/ SPEED SYMBOL	STD. RIM (inch)	SECTION WIDTH (mm)	OVERALL DIAMETER (mm)	MAX LOAD (KGS)	MAX LOAD (lbs)	MAX PRESSURE (PKa)	MAX PRESSURE (PSI)			
16 inch											
215/75R16LT8PR	107/103R	6J	216	728	975/875	2150/1930	450	65	72	E	E
265/70R16	112 T	8J	272	778	1120	2469	300	44	73	E	E
17 inch'											
215/60R17	96 S	6.5J	221	690	710	1565	300	44	72	E	E
225/60R17	99 S	6.5J	228	702	775	1709	300	44	72	E	E
225/65R17	102 S	6.5J	228	724	850	1874	300	44	72	E	E
235/65R17	104 T	7J	240	738	900	1984	300	44	72	E	E
265/65R17	112 S	8J	272	776	1120	2469	300	44	73	E	E
18 inch'											
215/55R18	99H XL	7J	226	693	775	1709	340	50	72	E	E
225/55R18	98 T	7J	233	705	750	1653	300	44	72	E	E
225/60R18	100 S	6.5J	228	727	800	1764	300	44	72	E	E
235/50R18	101T XL	7.5J	245	693	825	1819	340	50	72	E	E
235/55R18	100 T	7.5J	245	715	800	1764	300	44	72	E	E
235/60R18	107S XL	7J	240	739	975	2149	340	50	72	E	E
245/60R18	105 T	7J	248	751	925	2039	300	44	72	E	E
285/60R18	116 R	8.5J	292	799	1250	2756	300	44	75	E	E
19 inch'											
225/45R19	96T XL	7.5J	225	685	710	1565	340	50	72	E	E
235/55R19	105T XL	7.5J	245	741	925	2039	340	50	72	E	E
245/55R19	103 T	7.5J	253	753	875	1929	300	44	72	E	E
20 inch'											
285/50R20	112 S	9J	297	794	1120	2469	300	44	73	E	E



ARCTIC W-9



Upgraded silica compound ensures the tread maintains its softness in low temperatures to provide first-class safety. Lateral serrated sipe design on tread improves skid resistance.



Asymmetric pattern and three main grooves provide great maneuverability.
Tread Design



Tiny grooves absorb and store water which is dispersed on the surface of the ice to enhance grip.



The sipe design improves the tire's rigidity which reduces the possibility of deformation while driving. This makes driving more comfortable and braking at high speeds more stable.